



115 - ANCIENT TO MODERN (50 X 34)



155 - FOOTBALL LEAGUE LEGENDS (50 X 34)



118 - QUEEN VICTORIA (23 X 21)



107 - WINDSOR PENNIES (39 X 14)



150 - LONG EIGHT COIN (46 X 14)



116 - QUEEN MOTHER (20 X 16)



117 - 20TH CENTURY MONARCHS (39 X 17)



120 - ROYAL HISTORY (47 X 34)



114 - YESTERYEAR (43 X 30)



120B - ROYAL HISTORY & STAMPS (47 X 34)









103 - HOUSE OF WINDSOR (27 X 22)



104 - HOUSE OF WINDSOR (27 X 22)



101 - 5 COIN (24 X 21)



110  
SILVER COLLECTION  
(39 X 14)



106 - 6 COIN (26 X 20)



154 - WWII (24 X 21)



109 - 9 COIN (31 X 24)



420



421



422



423



161 - BATTLE OF BRITAIN (31 X 43)



161 (AN) - BATTLE OF BRITAIN (31 X 43)





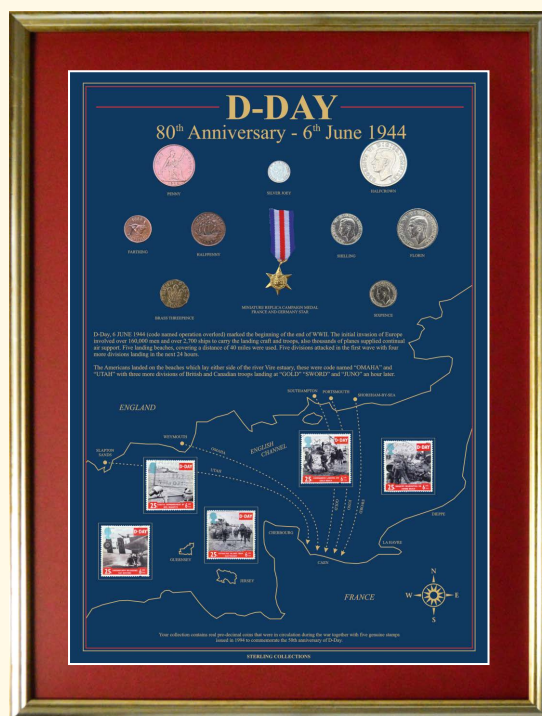
162 - WORLD WAR II VICTORY (50 X 34)



162s - WWII VICTORY SMALL



160 - D-DAY (31 X 43)



160 ANN - D-DAY (31 X 43)



160s - D-DAY SMALL  
(30 X 30)



160s ANN - D-DAY SMALL  
(30 X 30)



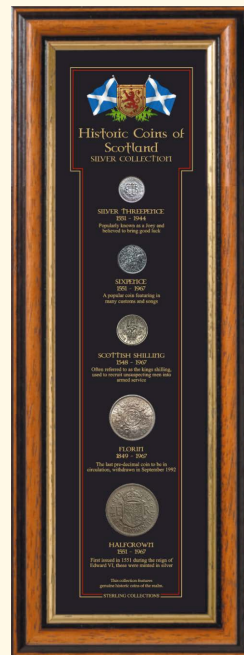




# Historic Coins of Scotland



109 Ss



110 S



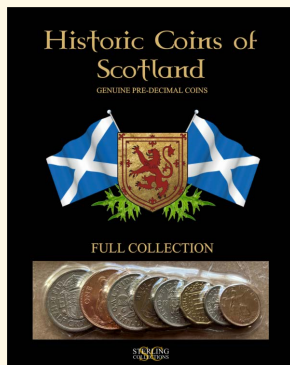
109 S



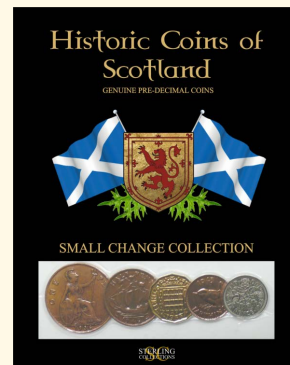
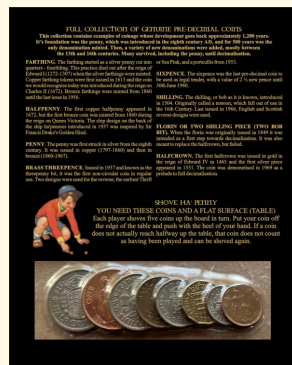
106 Ss



106 S



382 S



380 S



384s



385s



386s



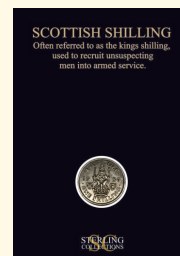
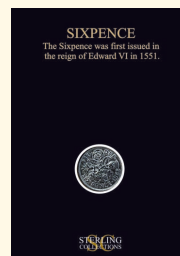
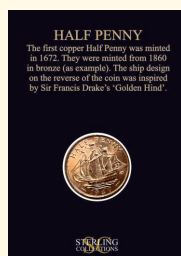
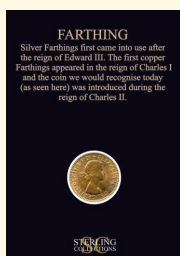
387s



388s



389s





A



B

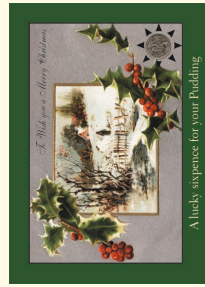


C



XMAS

D



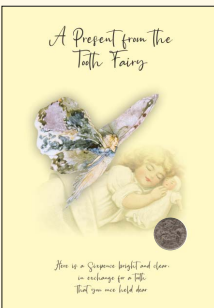
E



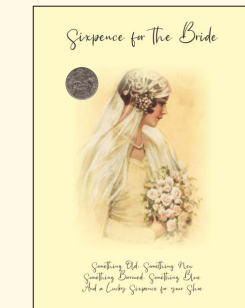
F



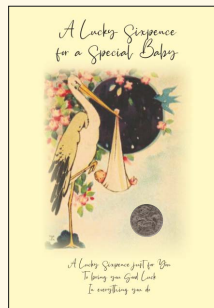
G



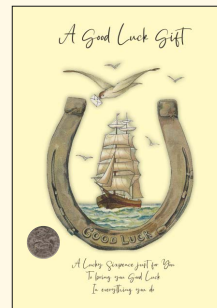
H



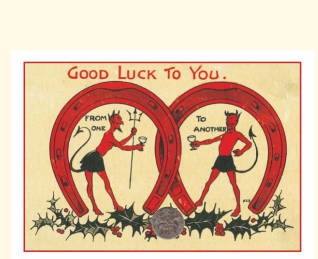
I



J



K



L

432

436

437

438

84

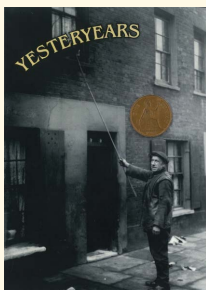
80

81

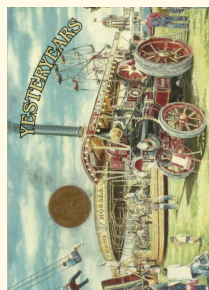
82

83

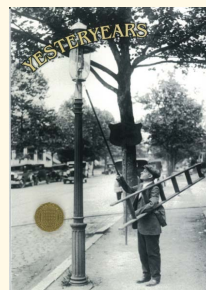
85



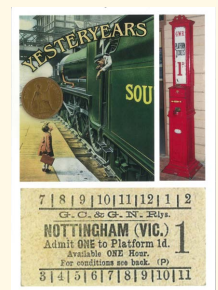
70



71



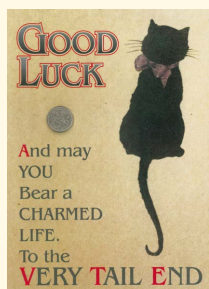
72



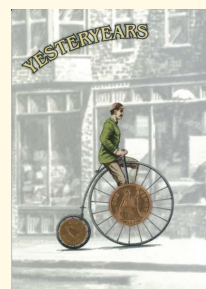
73



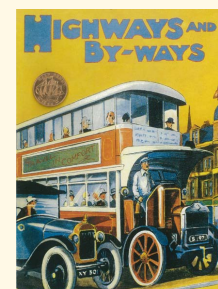
74



75



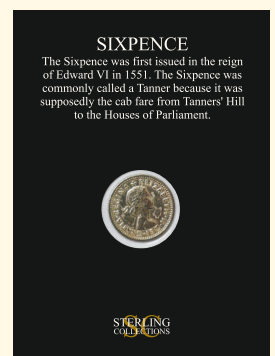
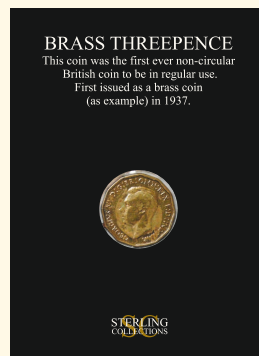
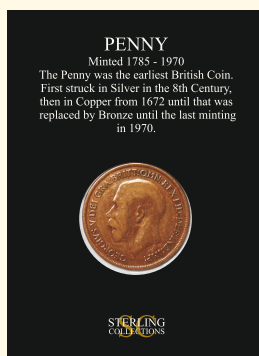
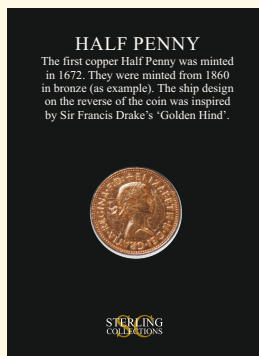
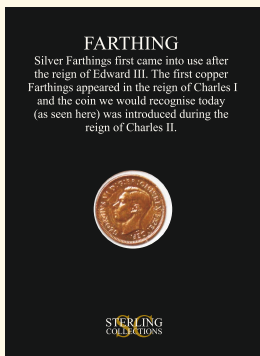
76



77



# Historical Coins of Great Britain Collection



Ref: 384

Ref: 385

Ref: 386

Ref: 387

Ref: 388



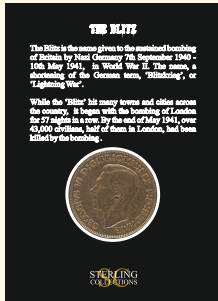
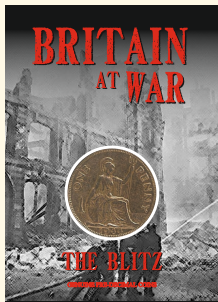
Ref: 380

Ref: 381

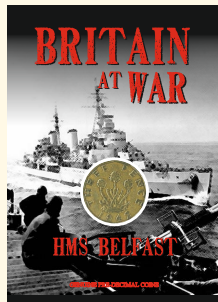
Ref: 382

Ref: 383

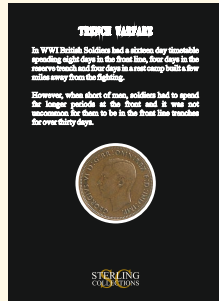
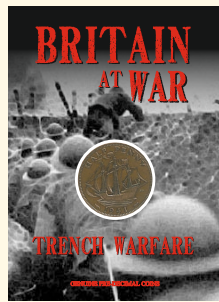




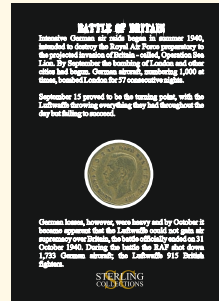
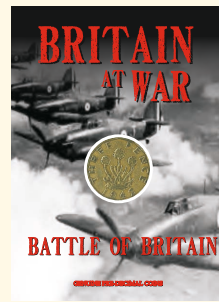
389



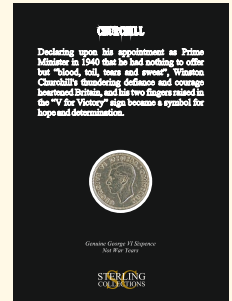
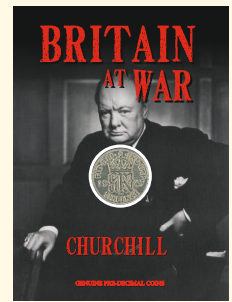
390



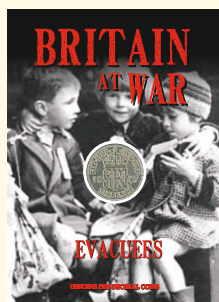
391



392



393



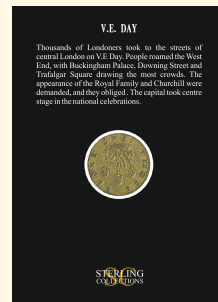
395



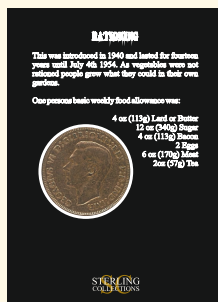
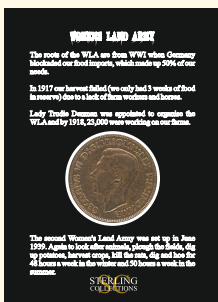
394



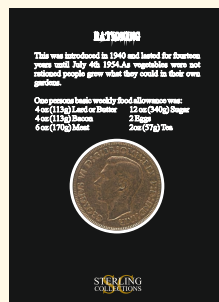
400



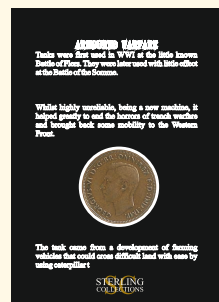
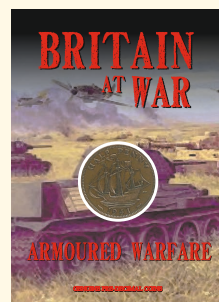
# BRITAIN AT WAR



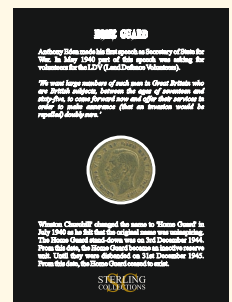
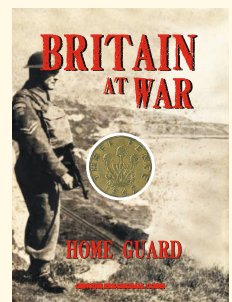
396



397



398



399